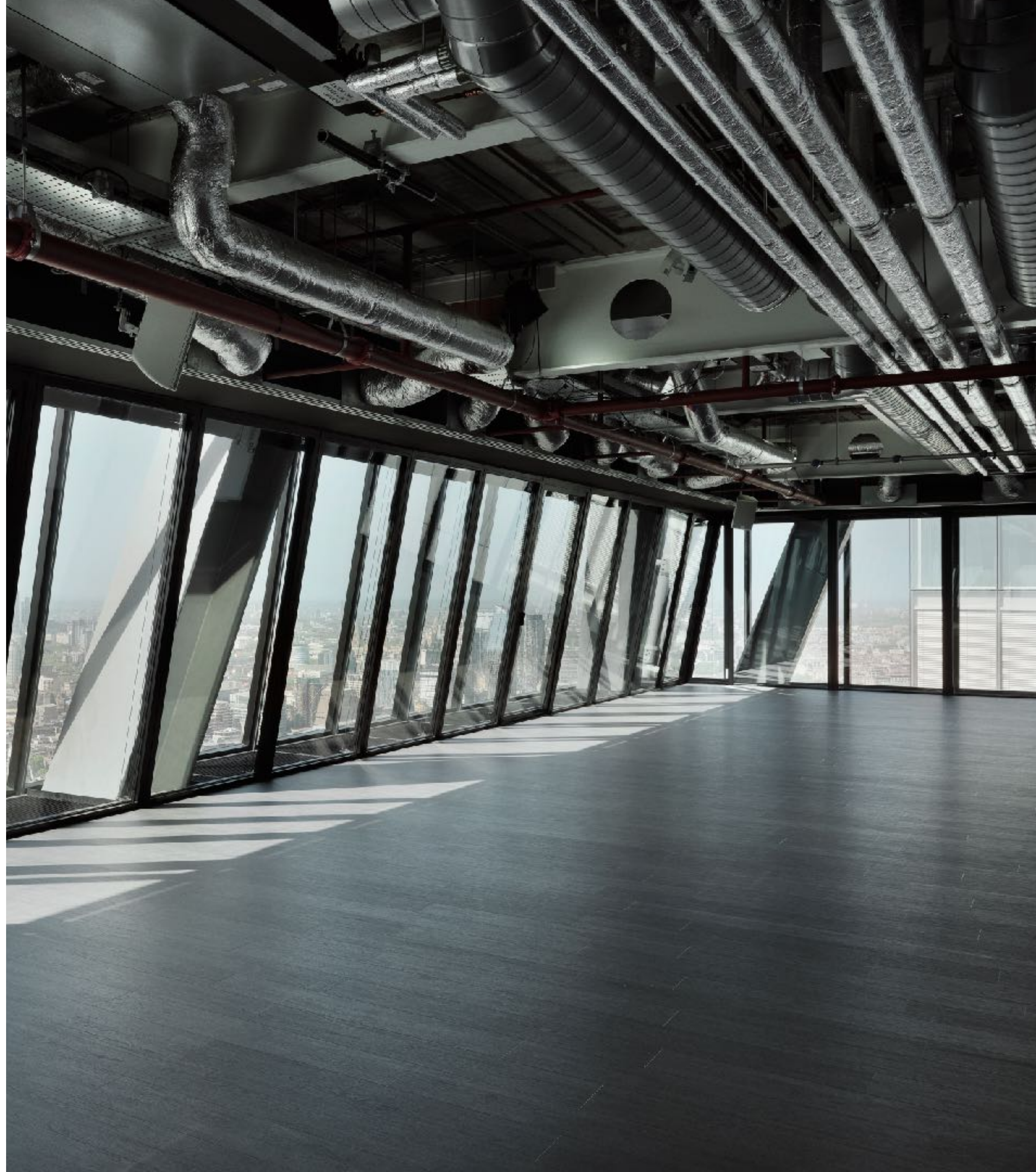




LANDING FORTY TWO

Landing Forty Two



At 200 metres, Landing Forty Two, a private design led space in the City of London, across an entire floor of Richard Rogers' 'cheesegrater' building. An event space for up to 300 people and closed to the public, the space is a bespoke offering with one-off views to the far edges of London

About Landing Forty Two



Landing Forty-Two occupies the entire forty-second floor of the renowned The Leadenhall building in the City of London. At nearly 200 metres in the air, it is the highest event space in the UK, with floor-to-ceiling windows offering unparalleled private views of London and beyond.

The Leadenhall Building, or ‘Cheesegrater’, is an icon of postmodern architecture and one of the most sought-after locations in the city. Defined by clean architectural lines and a cool, minimal aesthetic, the venue is a premium, private and fully flexible space for up to 300 people.

The innovative ‘inside-out’ steel structure of the building provides an uninterrupted canvas for custom-built floorplans, enabling you to zone the space or enjoy it wide open, with windows running the length of an Olympic swimming pool.

The venue incorporates the highest-quality technical infrastructure, including state-of-the-art LED lighting, zonally-controlled sound, high speed internet and a range of screens and staging. The venue offers more than 450 square metres of flexible space, perfect for conferences, product launches, receptions and dinners.



Views. By invitation only providing a new a perspective on London

CAPACITY

300

SIZE

500 sq.m

ARCHITECTURAL & INTERIOR INFLUENCE

Post modern
Skyscraper
Industrial

KEY FEATURES

Highest dedicated event space
Floor-to-ceiling glazing,
offering unique views of
London's skyline
Fitted out with the latest
lighting & sound installation
Views
Blank canvas
Private views, closed to
the public

PERFECT FOR

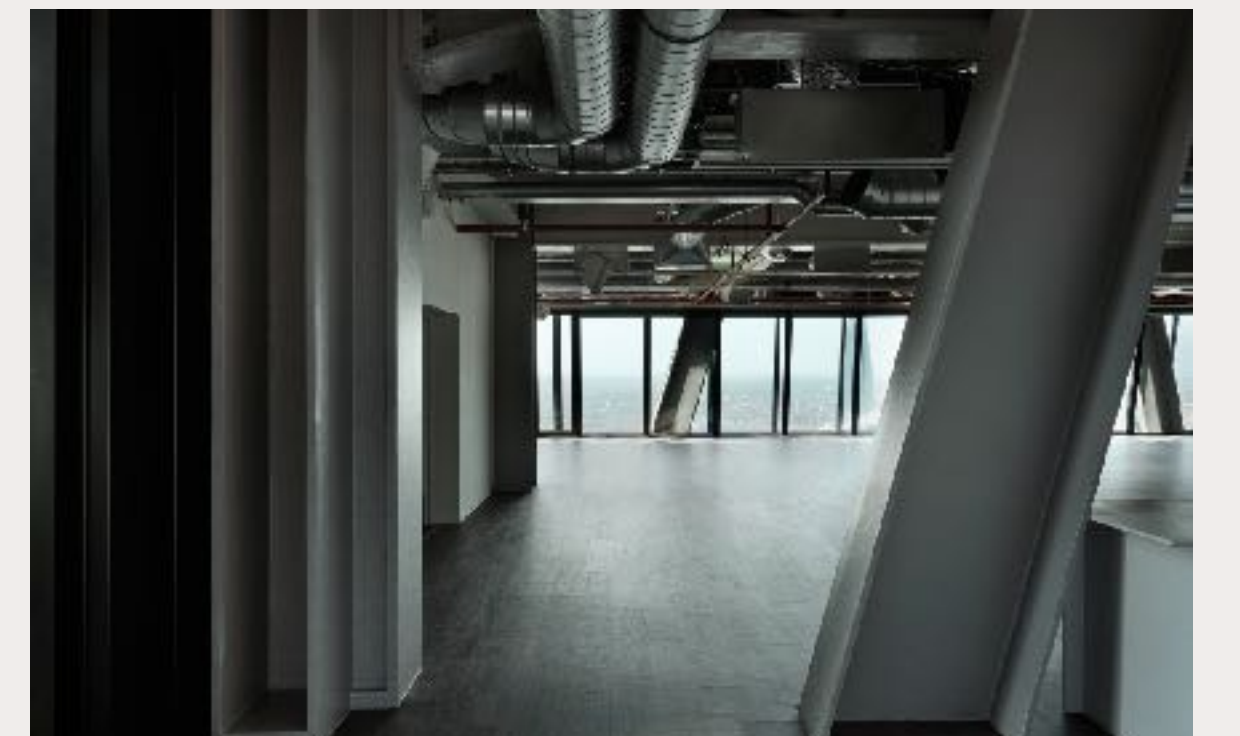
Exhibitions
Filming
Brand experience
Private dinners & celebrations
Conferences
Awards

LOCATION

Leadenhall Building,
London EC3V 4AB



Private and *fully flexible*





Views and *design-led*
space on a new level

Spaces

The Main Space

Landing Forty Two offers some of the best views in London, with wraparound floor-to-ceiling windows, and pristine architectural finishes. The event space occupies the entire forty-second floor of the building, and is fully customisable, from floorplan to furniture.

The lobby area, defined by the bright yellow steel structure of the building, can be used as a reception area for registering guests or for a step-and-repeat.

Access to the events floor is via the building's glazed external-facing high-speed lifts, which deliver guests to the venue in just over 30 seconds.







The Building

The Leadenhall Building, also known as the ‘Cheesegrater’ for the dynamic shape it carves in the skyline, was designed by Richard Rogers in 2014. Now recognised as an icon of postmodern architecture, it was awarded the Royal Institute of British Architects’ National Award in 2018.

The building is 225 metres tall, with 48 floors that diminish in size as they ascend, providing the building’s distinctive tapering shape, angled at 10 degrees skywards. This innovative design was a response to specific planning requirements protecting views of major London landmarks, especially St Paul’s Cathedral in the City and the Palace of Westminster on the river.

The design excels in function and sustainability: the innovative ‘inside-out’ steel structure of the building means there is complete flexibility in the interior, while the triple-layer glass ‘skin’ keeps the building warm in the winter and comfortably cool in the summer months.





Specifications

Event Spaces

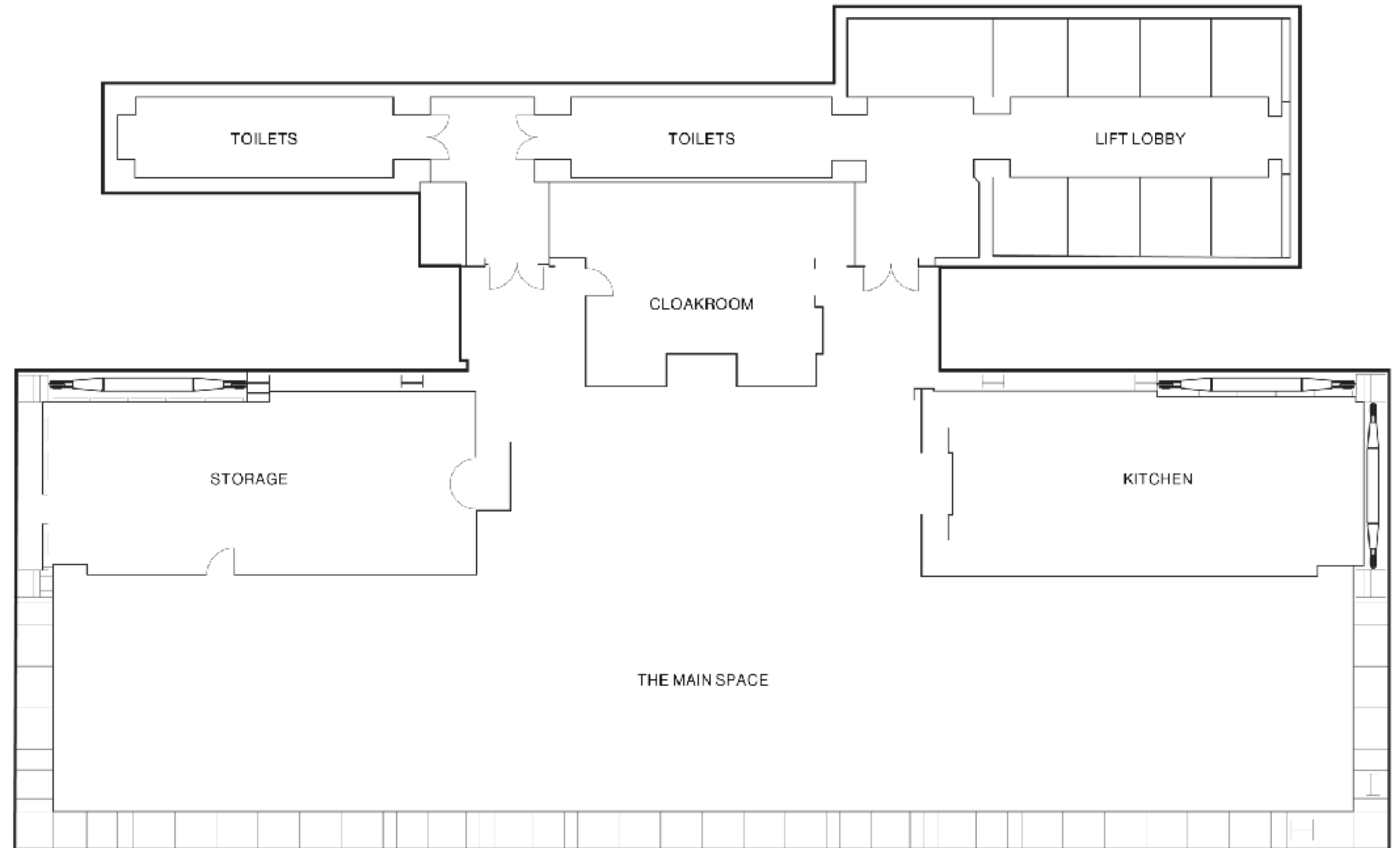
Dimensions

Capacity

SPACES	L(M)	W(M)	H(M)	SQ,M	STANDING	THEATRE	DINNER	CABARET
Main space	46.6	14.8	2.7	860	300	250	220	152

Floorplans

The Main Space layout



Facilities

Kitchen

There is a fully equipped preparatory kitchen on site. Through our exclusive partners, Moving Venue, we can provide dinner catering for up to 240 guests, with reception catering for up to 300.

City View

Landing Forty Two has triple-aspect, floor-to-ceiling glazing, offering unparalleled views of London and beyond.

Bathrooms

The sleek and modern bathrooms accommodate up to 300 guests

Production

The venue is fitted with the highest-quality technical infrastructure, including state-of-the-art LED lighting, zonally-controlled sound, high speed internet and a range of screens and staging. Our in-house production partners at Vibration Production provide bespoke event design, set build and production solutions from curation to completion.

Production offices

Generous production offices have direct access to the event spaces and a hatch that can open onto the foyer for ticketing or information services. The space is air conditioned, fully furnished and has internet access.



Neighbourhood

Located in the heart of the City of London, Landing Forty Two occupies the forty-second floor of The Leadenhall Building. The street it sits on, also named Leadenhall, is a historic centre of commerce that sees towering glass skyscrapers alongside survivors from the street's medieval past, such as the fourteenth-century church of St Katherine Cree.

Today, it is a bustling financial centre, with vibrant culture and the city's finest hospitality. With exceptional transport links, Landing Forty Two is a short walk to Bank, Fenchurch Street, Liverpool Street and Monument Underground stations.

Location

ADDRESS

The Leadenhall Building
London, EC3V 4AB

TRANSPORT OPTIONS

Bank Station
Fenchurch Street Station
Liverpool Street Station
Monument Station

ADDITIONAL DETAILS

Short walk to Bank,
Fenchurch Street, Liverpool
Street and Monument
Vibrant city culture and the
city's finest hospitality



Untold *possibilities*

Spaces & Stories



Spaces & Stories is an eclectic collection of *out-of-the-ordinary* venues and locations.

We are an established Venue Operator with a difference. Our sites range in style and scale, but are all individual in character, from landmark locations to cultural cornerstones. We help you create stories that endure.



Untold *possibilities*

THANK YOU

+44 (0)203-319-9332
www.spacesstories.com

Spaces & Stories