

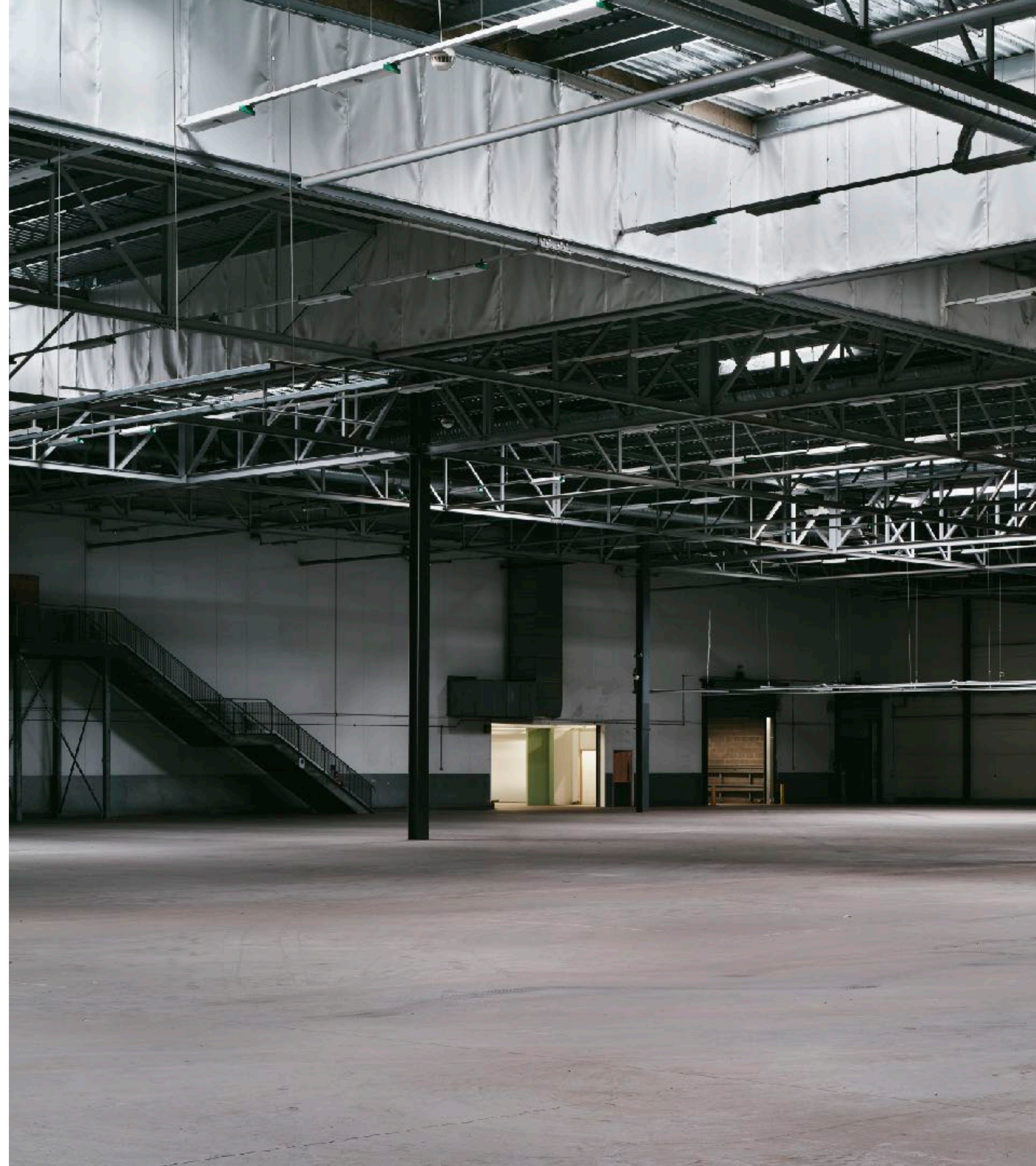


**DRUMSHEDS**

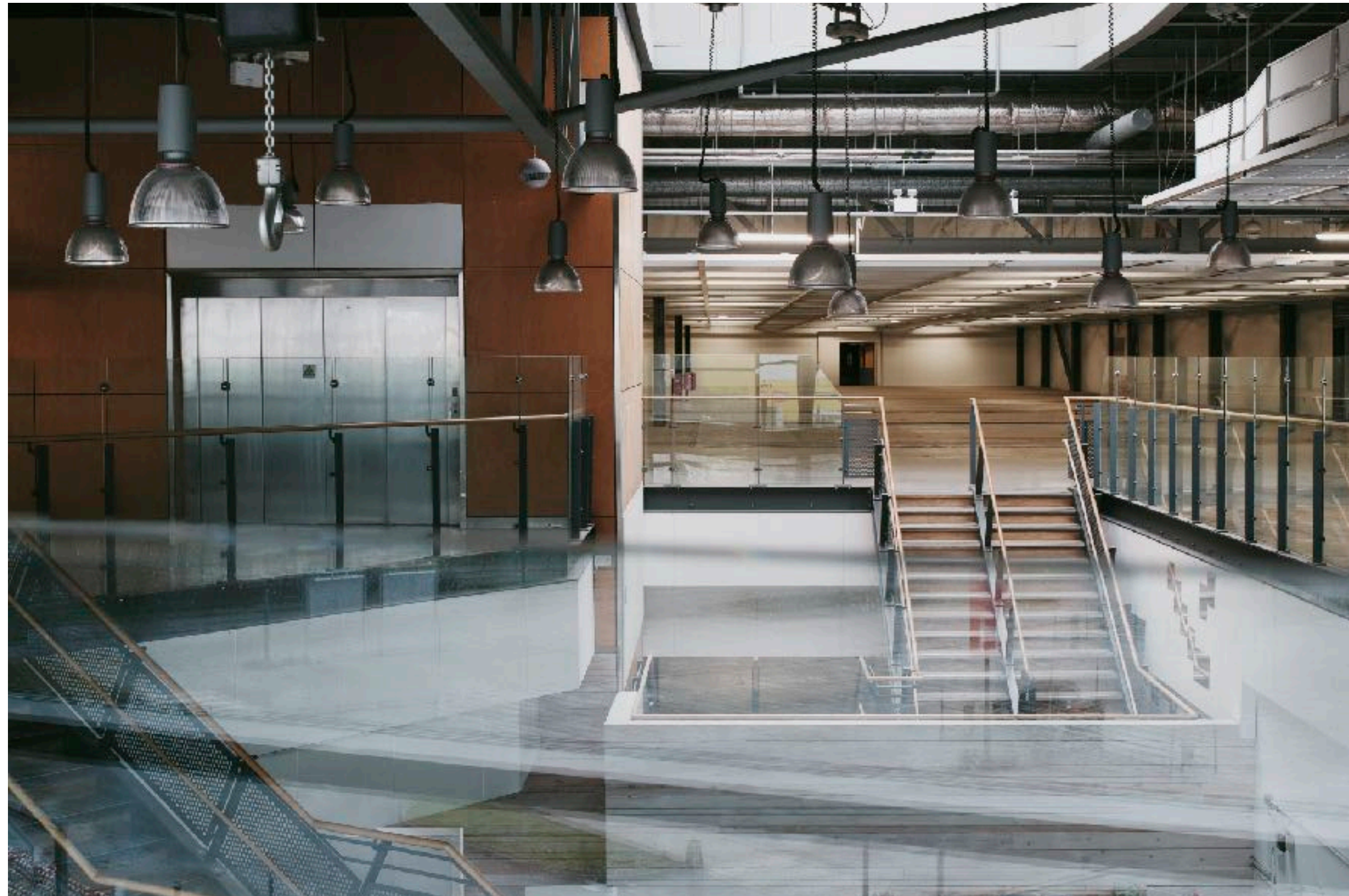
# Drumsheds



Drumsheds does things a little bit differently (and in an unashamedly massive way). Hybrid, multi-level, multi-room, set in a disused industrial warehouse in North London - this is the first dedicated culture space of this scale and kind.



# About Drumsheds

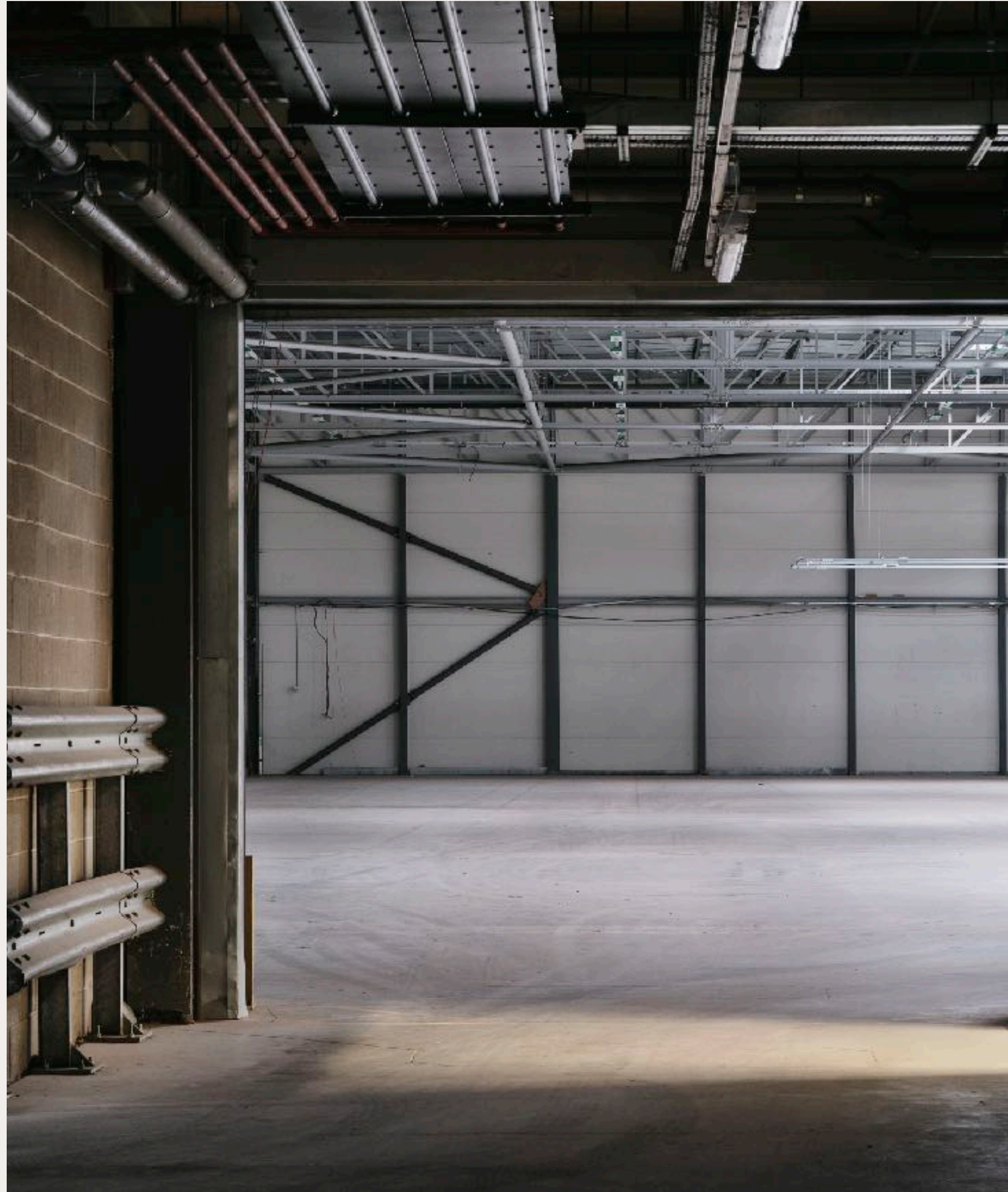


Reimagined from unused retail warehouses, Drumsheds breaks free from the constraints of traditional spaces. A place without walls, where nothing is fixed.

Drumsheds has never been used for events or filming before. It offers a hybrid space suitable for a wide range of event types, including brand launches, exhibitions, fashion shows, game launches, and music shows. Additionally, it serves as an excellent option for location filming with blackout facilities and unit-base capacities.

With open plan settings and advanced technical production as part of the infrastructure, its easy to facilitate a seamless execution of events. The space provides room for culture to thrive and the functional layout allows for the creation of distinct areas, delivering a unique experience for guests.

We embrace the potential of overlooked and under loved spaces. This is a space to explore and unleash your creative potential.



# An untouched multi-purpose space offering unique infrastructure in the heart of London

---

## CAPACITY

15,000

## SIZE

56,485 sq m

## ARCHITECTURAL & INTERIOR INFLUENCE

Vintage  
60's & 70's architecture  
Brutalist design

---

## KEY FEATURES

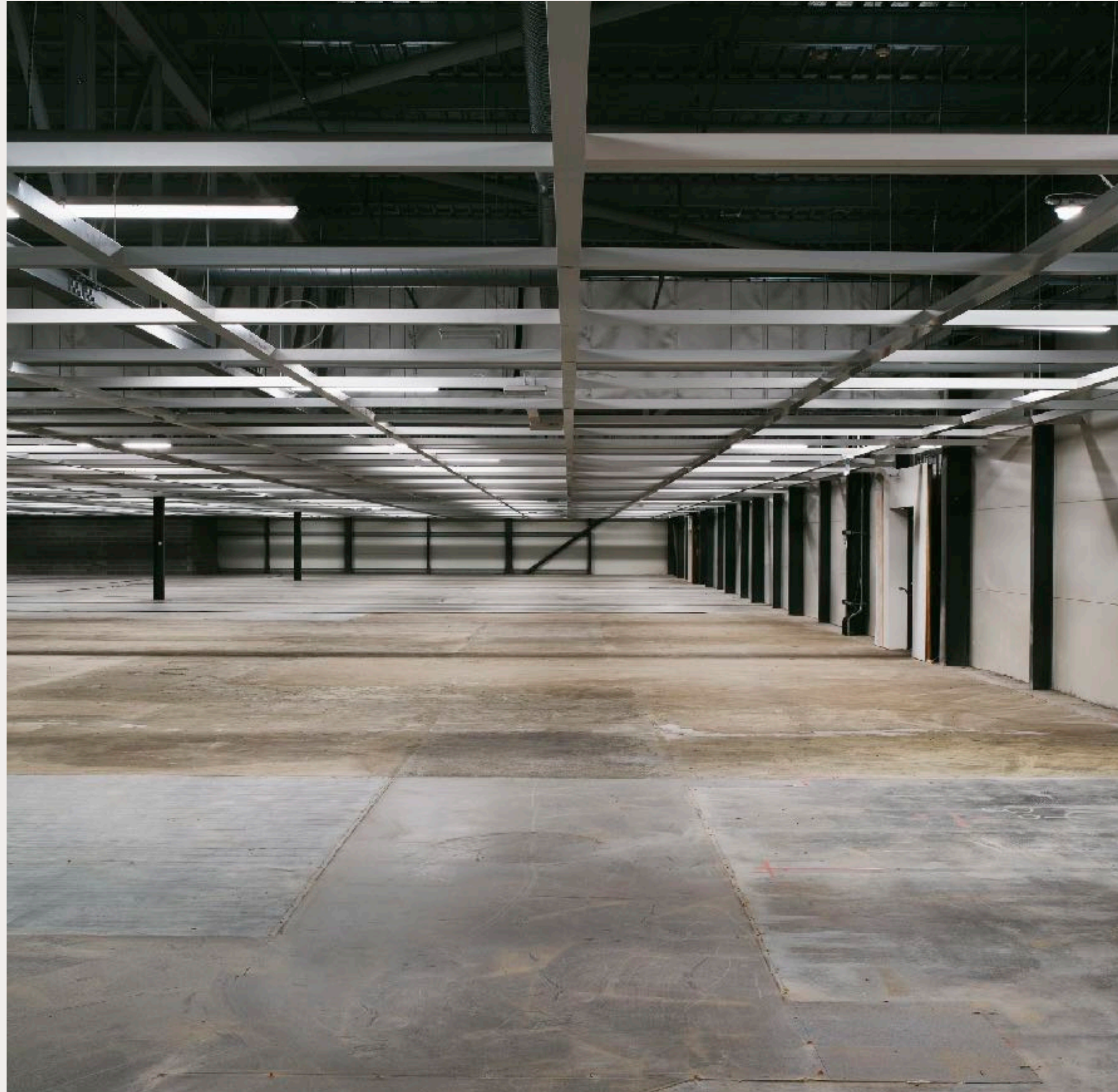
Outdoor space  
In house stage, PA and rigging  
Dressing rooms  
Contemporary warehouse  
Onsite parking  
Multiple spaces  
Flexible/hybrid space  
Option to blackout  
Easily accessible from Central London

## PERFECT FOR

Exhibition  
Conference  
Immersive experience  
Brand experience  
Product launch  
Unit base  
Location filming  
Gaming events  
Fashion shows

## LOCATION

6 Glover Drive,  
Tottenham N18 3HF



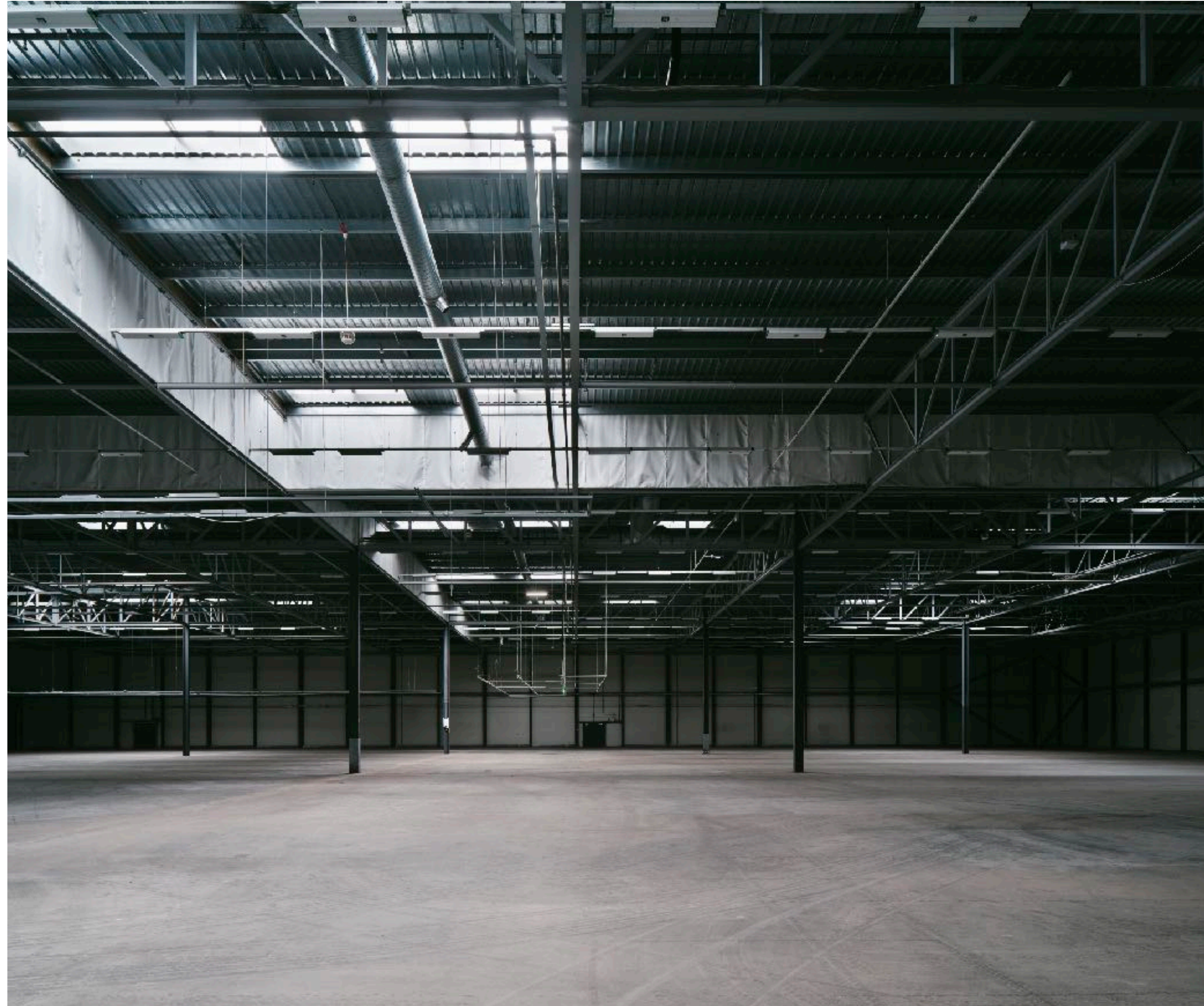
Unconfined space,  
limitless possibilities





The new destination for music, events, filming, art and business. *A multi-purpose* venue where culture thrives.





## *Spaces* X Room

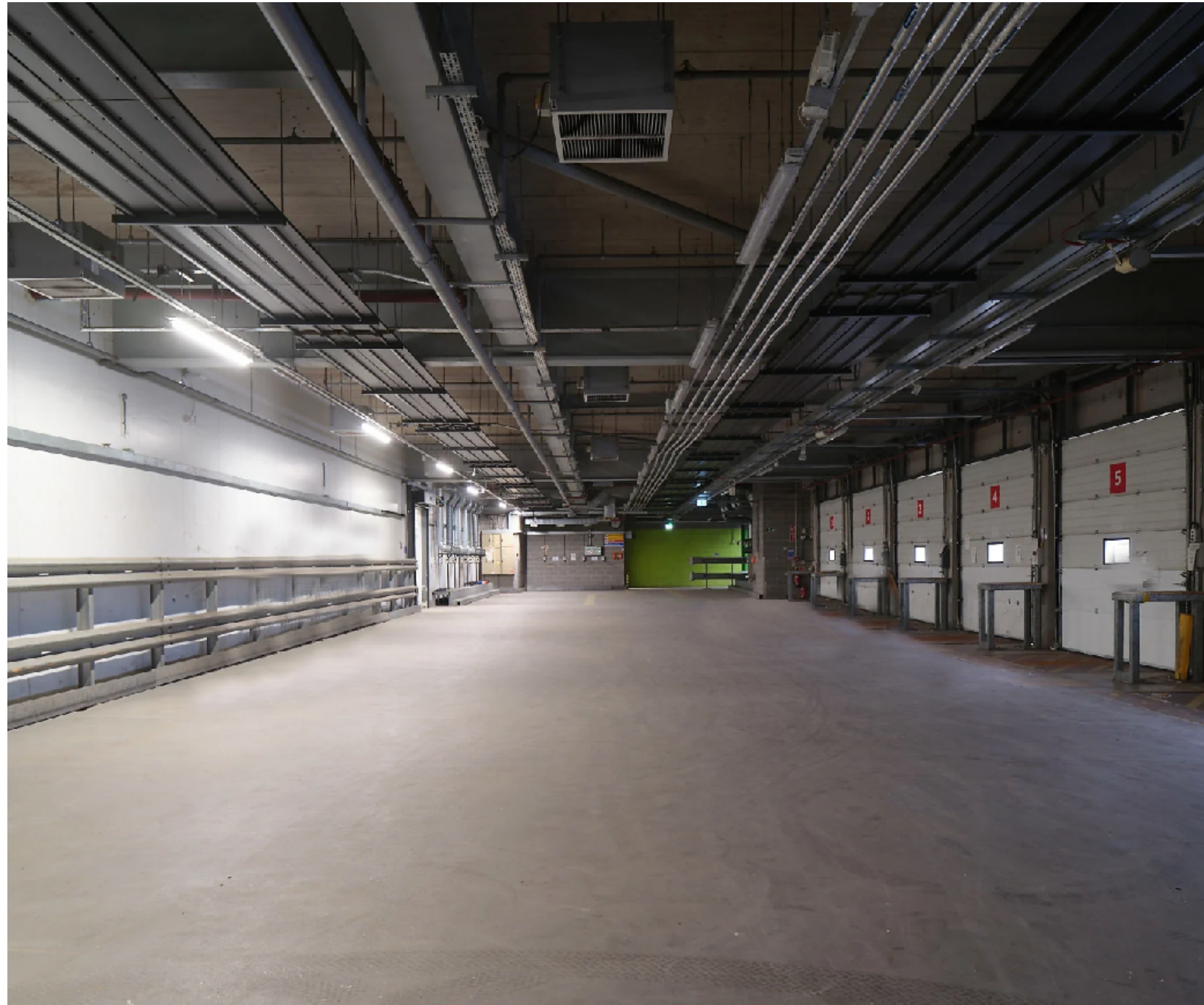
The Main Space of Drumsheds: X-Room is one of the largest warehouse spaces in London. A raw, rare, industrial space. Soaring ceilings. Sprawling floors. 109,813 sq ft of versatile, hybrid and multi-functional venue space that can accommodate up to 15,000 people and a variety of large-scale activations, all with an in-house stage, PA and rigging, and dressing rooms. A new definition of freedom.

# *Spaces* Y Room

Drumsheds Second Space: Y-Room can accommodate a capacity of 5,000. Slightly smaller boundaries, same raw, industrial feel. The space boasts a flexible layout and a range of facilities, including a stage, PA system, power, and rigging systems. It is perfect for standalone, ticketed culture and music right through to fashion shows, filming or something else entirely. Whatever you're into, this room will redefine it.







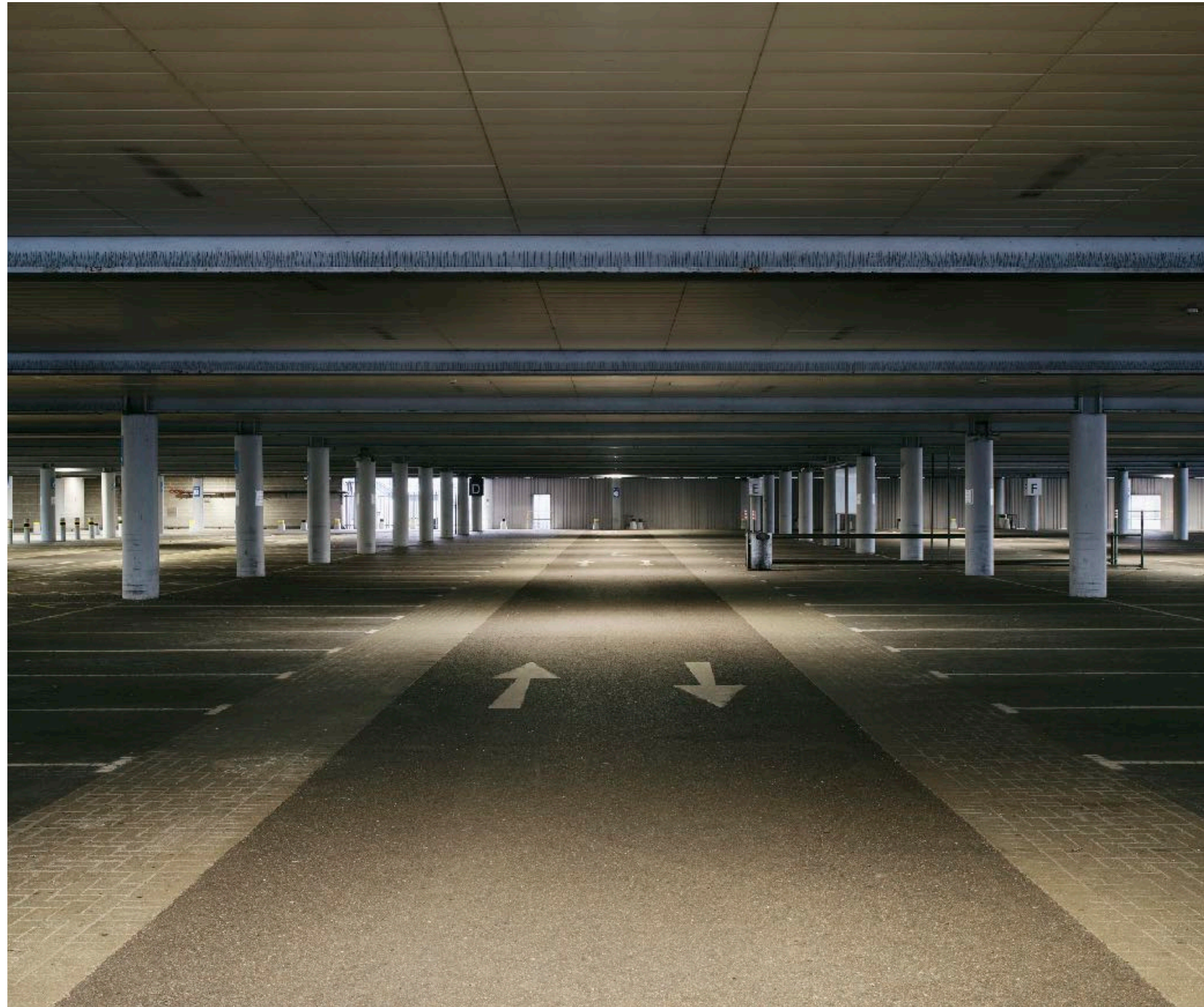
## *Spaces* Z Room

Drumsheds is all about size, but that doesn't mean it can't do intimacy. Z-Room is where things get up close and personal - with a capacity of 1,000. Offering a smaller, more intimate space, the room provides an excellent connector between the other two spaces. Equipped with power, and rigging systems, this area is perfect for more exclusive events or functions requiring a more intimate atmosphere.

# *Spaces* The Gallery

A large 5,000-capacity area located on the second level of Drumsheds, The Gallery is the perfect space for all hire types and as an additional hire to rooms X, Y and Z. At 6,174sq m it is the perfect blank canvas space. Facilities include full power and rigging.





## *Spaces* Ground Level

A large multipurpose undercover ground level space suitable for all hire types and a perfect area to compliment hire of The Yard, permitting for all weather types. Ideal for festivals, food markets, filming and exhibitions.

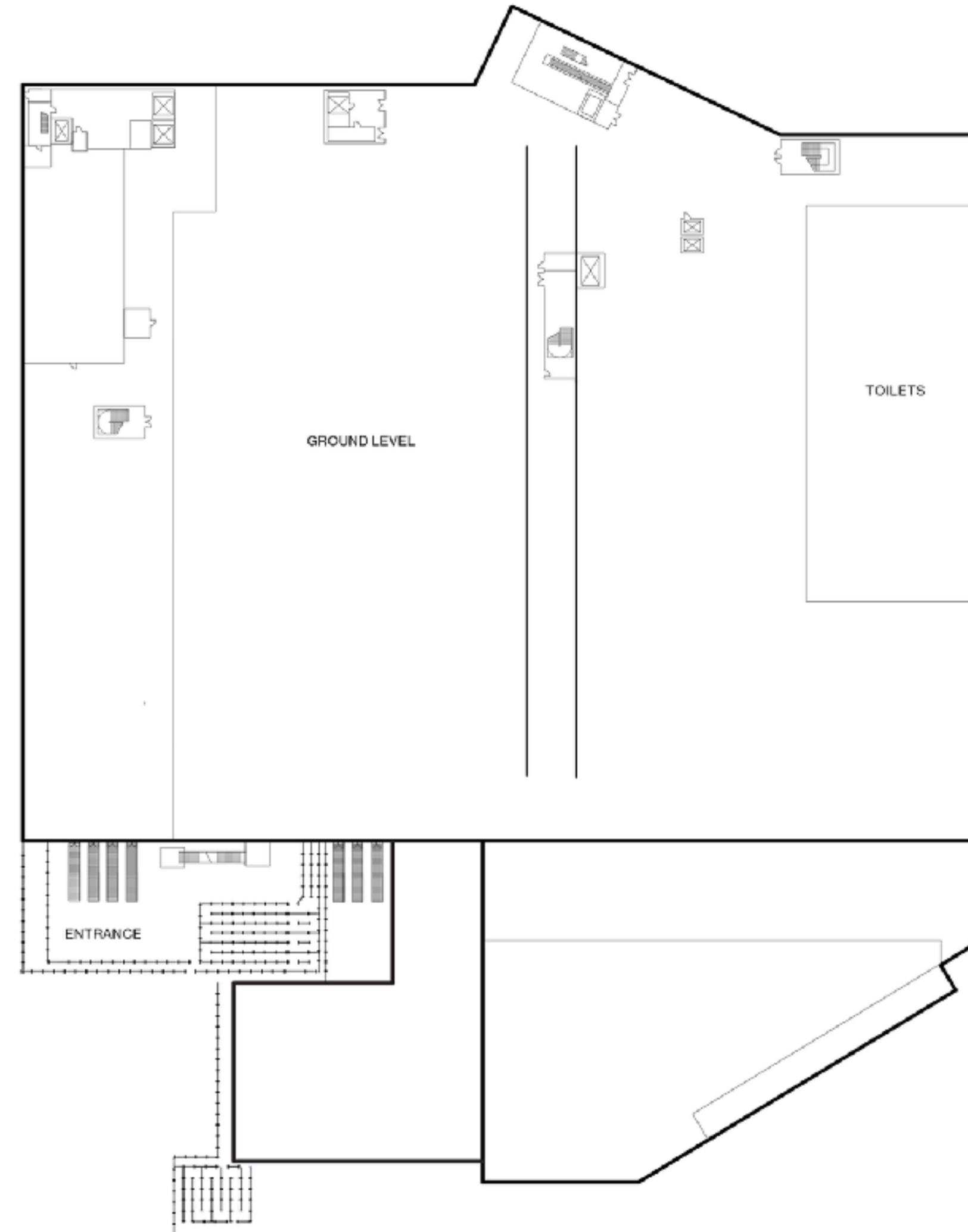
# *Spaces* The Yard

The Yard is Drumsheds' dedicated outdoor events space, with direct access to the interior spaces of the venue. The perfect space to host events such as festivals, summer parties and street food markets.



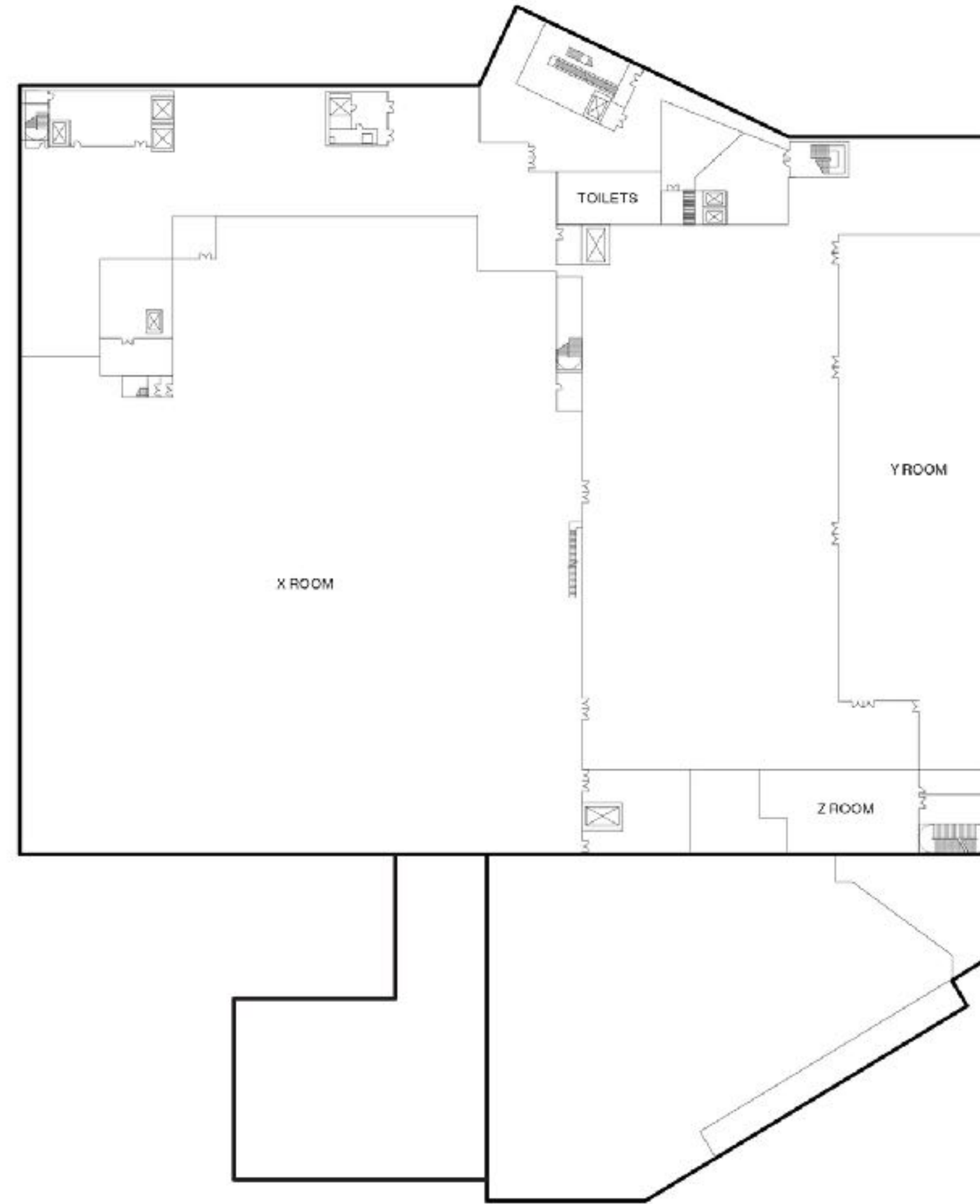
# *Floorplans*

## Ground floor layout



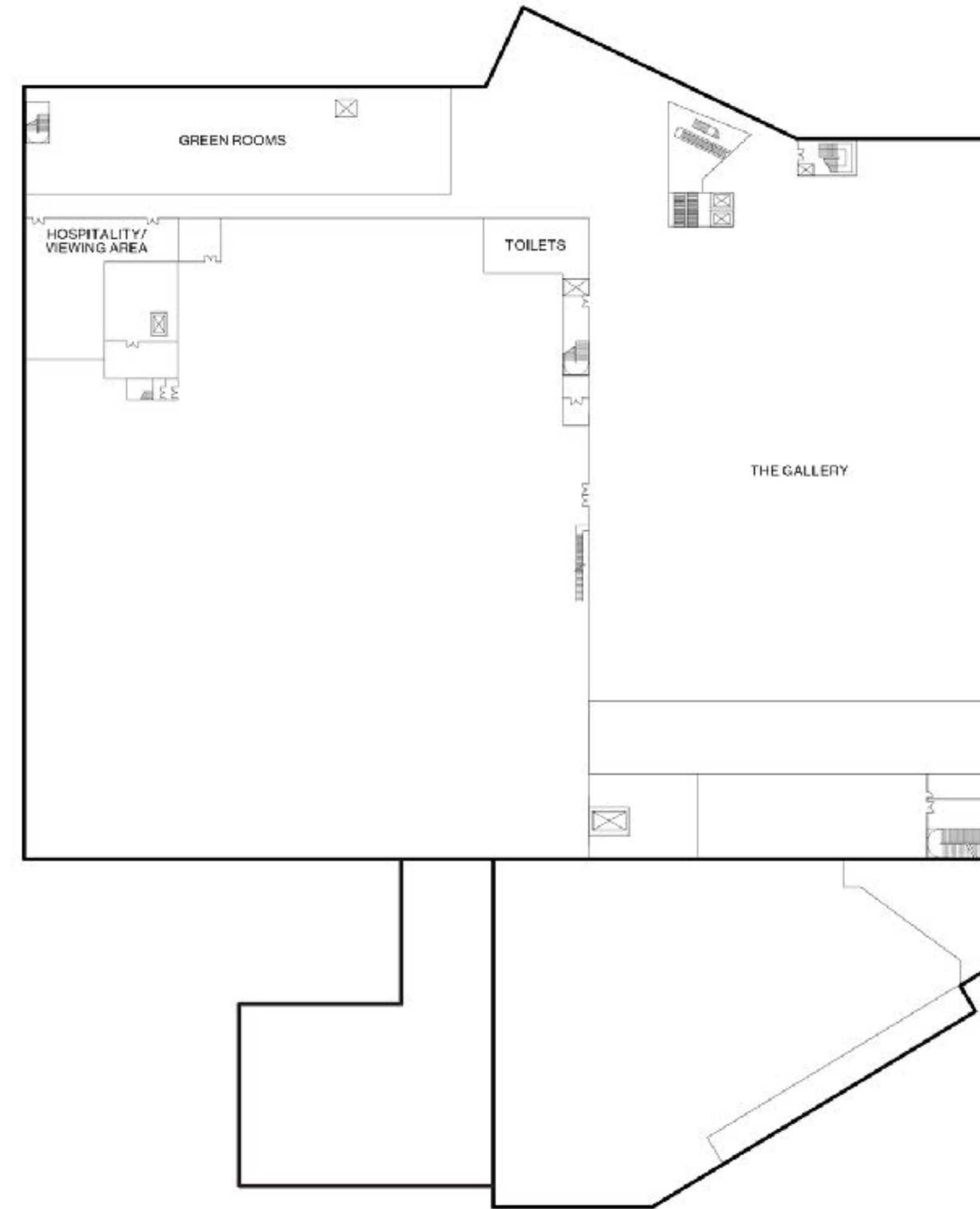
# *Floorplans*

## First floor layout



# *Floorplans*

## Second floor layout



# *Location*

---

ADDRESS

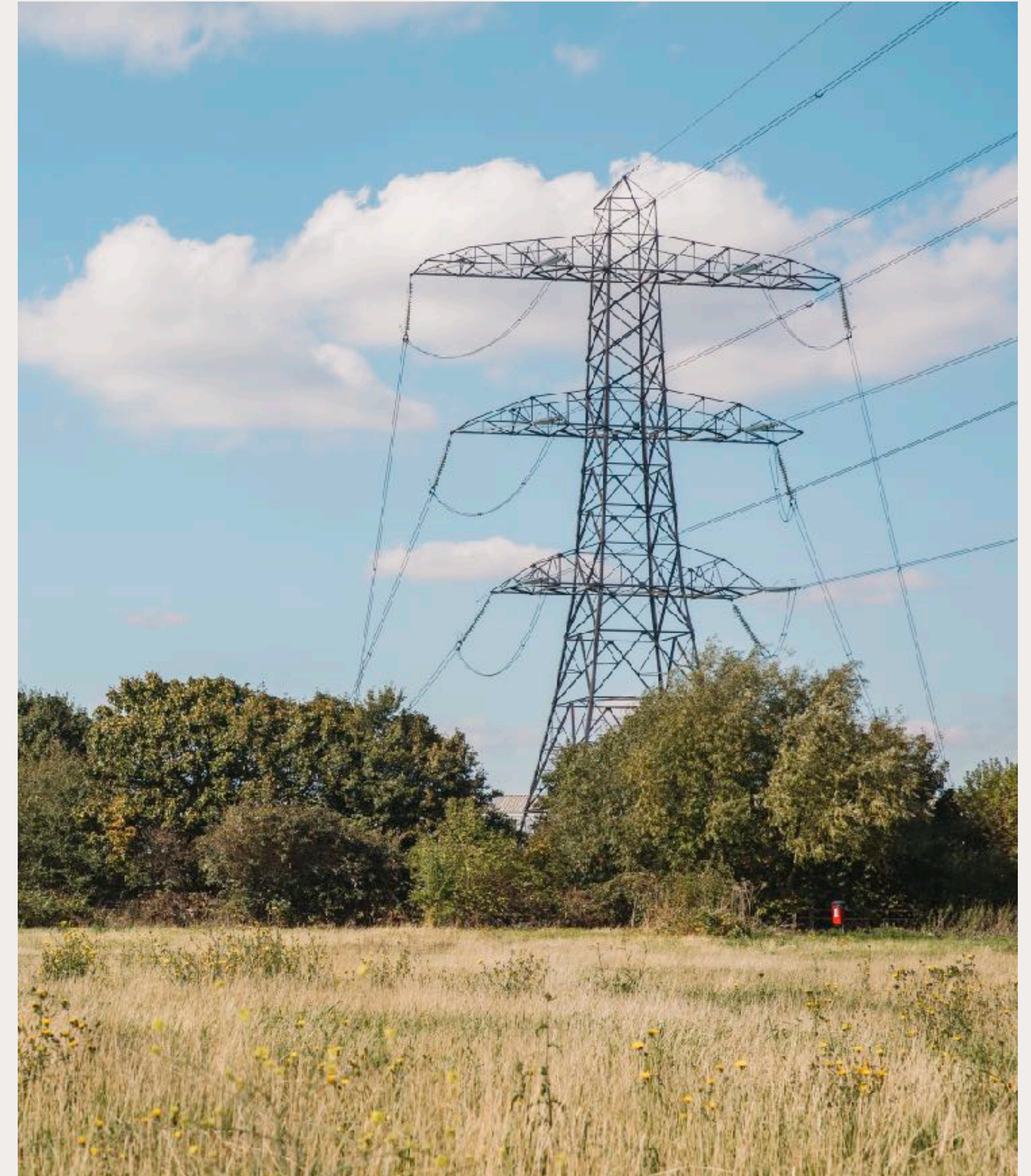
6 Glover Drive,  
Tottenham N18 3HF

TRANSPORT OPTIONS

Meridian Water  
Tottenham Hale  
Walthamstow

ADDITIONAL DETAILS

Easily accessible via rail or tube on Great Anglia, National Rail, Overground and Victoria Line. The nearest stations are Meridian Water Station & Tottenham Hale Station. Adjacent to the North Circular, the new Meridian Water station is on the planned Crossrail 2 route, providing excellent rail and road links to London and its surrounding airports.





Untold *possibilities*

# Spaces & Stories



Spaces & Stories is an eclectic collection of *out-of-the-ordinary* venues and locations.

We are an established Venue Operator with a difference. Our sites range in style and scale, but are all individual in character, from landmark locations to cultural cornerstones. We help you create stories that endure.



Untold *possibilities*

THANK YOU

+44 (0)203-319-9332  
[www.spacesstories.com](http://www.spacesstories.com)

Spaces & Stories