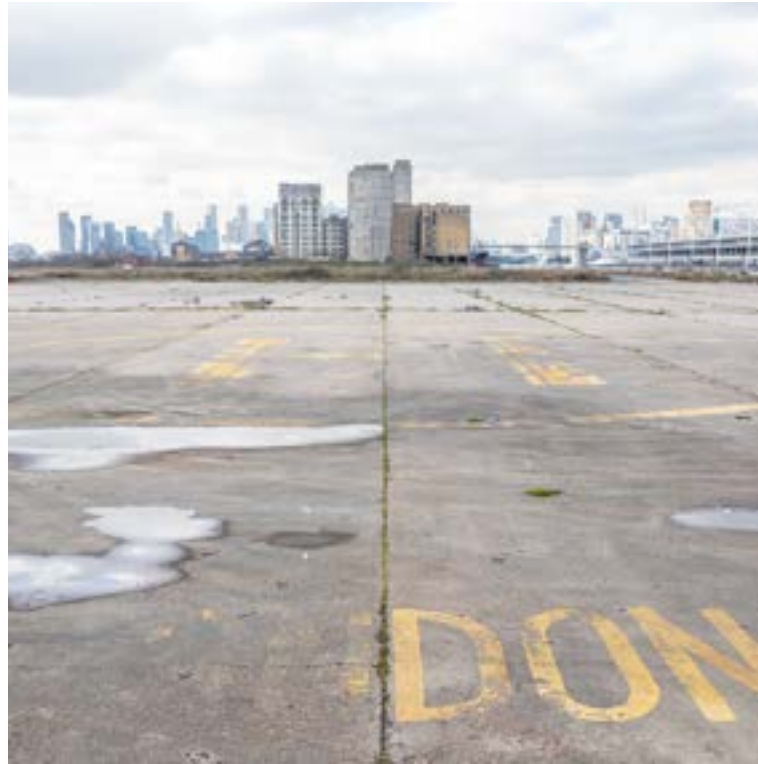




# SILVERWORKS ISLAND

# Silverworks Island



Silverworks Island is a 37,000 square-metre outdoor cultural venue on the banks of the River Thames. With a year-round curated programme of creatively bold and culturally innovative events, it promotes meaningful exchange between international culture and the vibrant local community of East London's Docklands.



# *About* Silverworks Island



Silverworks Island is a transformable open-air space with views over the water, a canvas for imagination and innovation at the gateway to the capital.

With the option to hire the site exclusively or choose from one of three areas, the site can be modified to suit you. Organisers are able to transform the venue's backdrop, creating the perfect setting for film production, music, festivals, brand experiences and corporate events.

Inspired by the flow of goods and merchant history of the local area, Silverworks Island is a site of cultural exchange at the water's edge, where international programming meets local creativity and innovation.

The team are dedicated to providing meaningful impact for the area and local communities, inspiring home-grown talent and providing employment opportunities in London's Royal Docks.



# *A pioneering* new open-air destination for London in the heart of The Royal Docks

---

## CAPACITY

20,000

## SIZE

37,000 sq.m

## ARCHITECTURAL & INTERIOR INFLUENCE

Open-air  
Waterside  
Industrial

---

## KEY FEATURES

Vast space  
City views  
Open-air  
Hardstanding ground  
Waterside

## PERFECT FOR

Festivals  
Brand activations  
TV & film  
Unit base

## LOCATION

Silvertown Square,  
Royal Victoria Dock  
London, E16 2BU

A 37,000 square-metre outdoor cultural venue on the banks of the River Thames.





*A transformable* open-air space with views over the water.





A canvas for *imagination*  
and innovation at the  
gateway to the capital.





# *Spaces* Silverworks Island

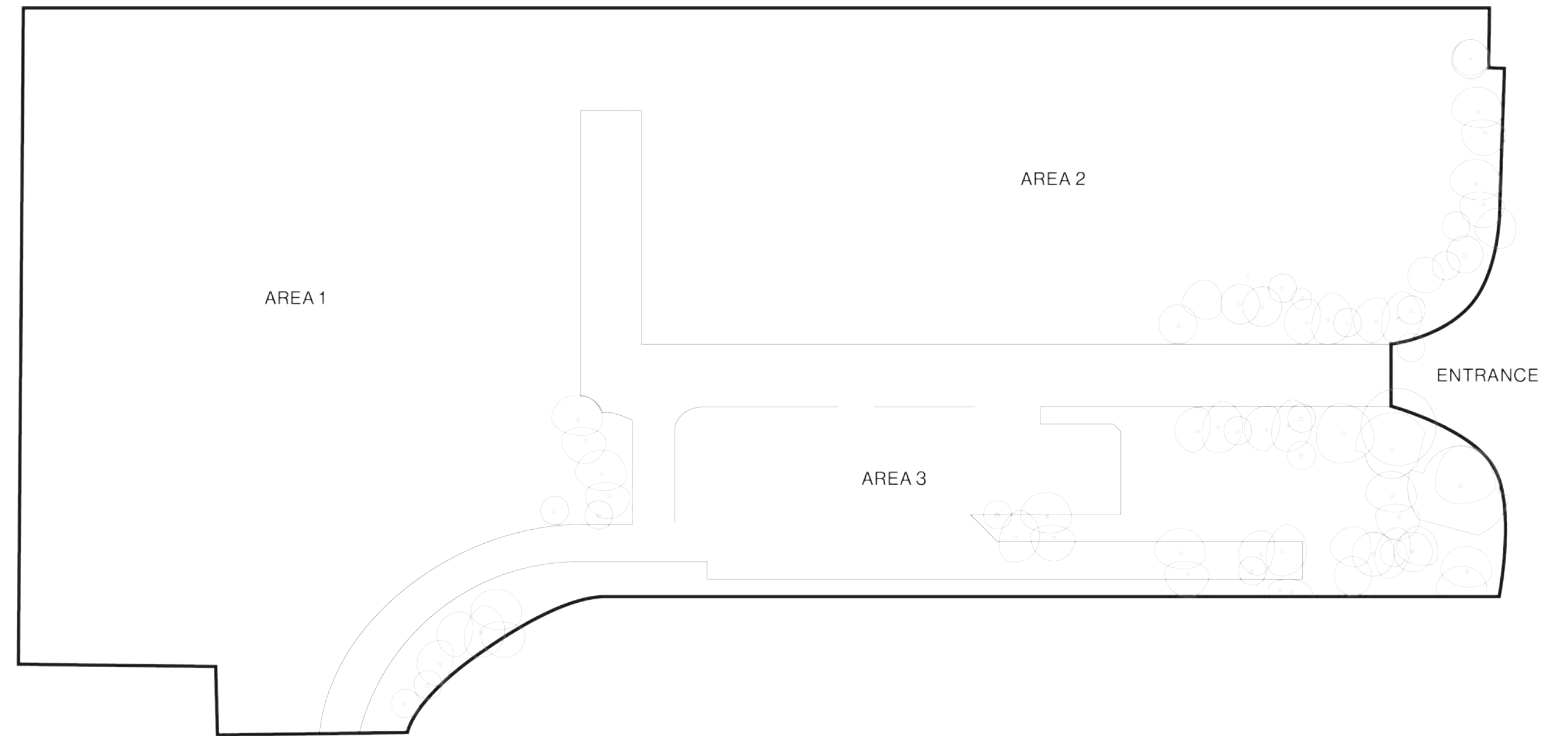
A 37,000 square-metre open-air space on the banks of the River Thames, with the option to activate the site exclusively or choose from areas 1, 2 and 3. With views over the water, this outdoor site offers a striking industrial setting for large-scale events and productions.





# *Floorplans*

## Ground floor layout



# *Location* Silverworks Island

---

ADDRESS

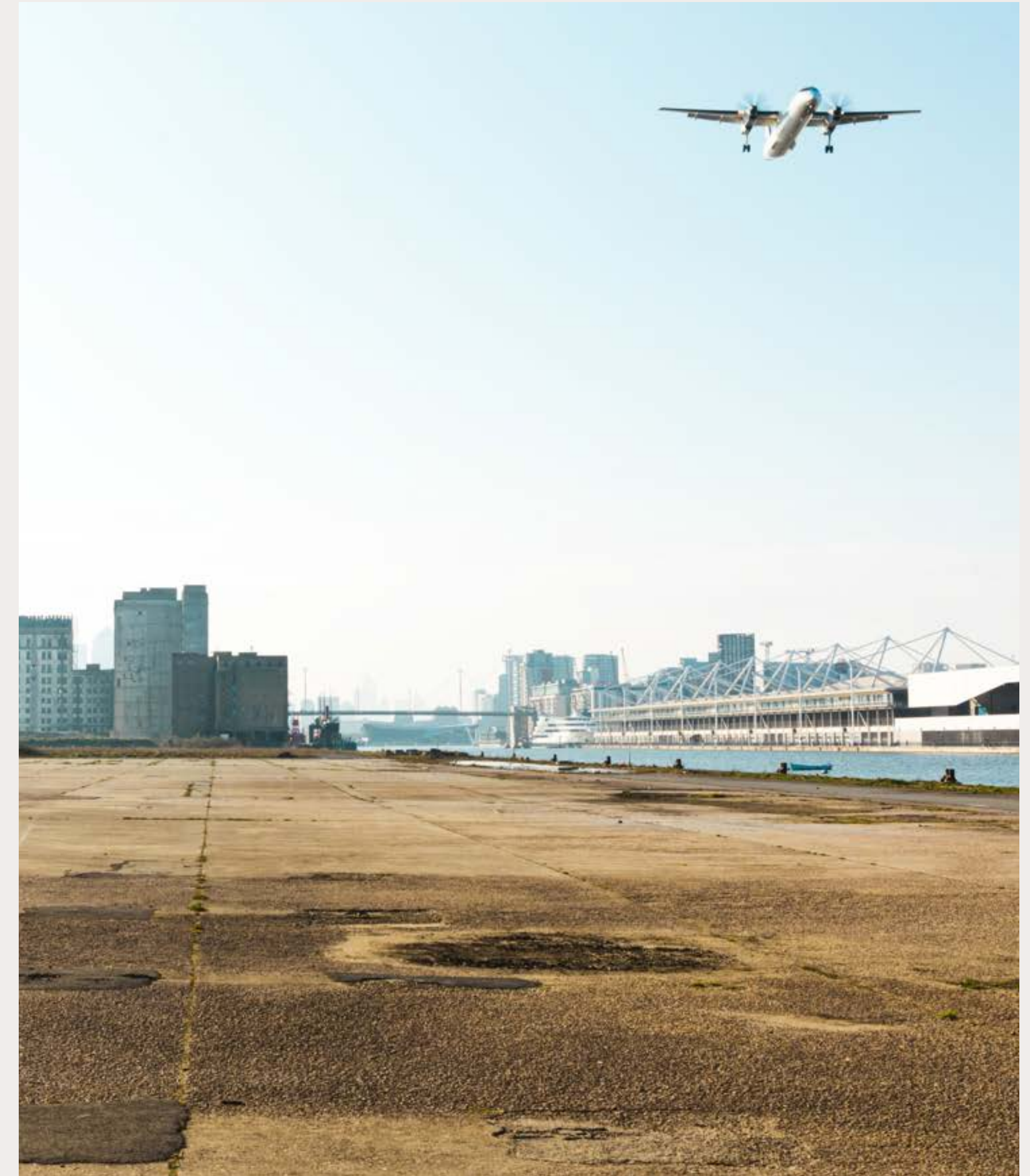
Silvertown Square, Royal  
Victoria Dock  
London E16 2BU

TRANSPORT OPTIONS

London City Airport  
DLR

ADDITIONAL DETAILS

Minutes from London City Airport  
A fast-developing neighbourhood,  
home to the University of East  
London and the Thames Barrier Park





## *Neighbourhood* Silverworks Island

Silvertown Quays sits within Victoria Dock, a former thriving industrial centre that began welcoming steam ships in 1855. Named after the factories built in the nineteenth century by the industrialist Stephen William Silver, the area is one of London's biggest regeneration projects. The largely vacant 63-acre site is being transformed to bring new housing, culture and commerce to Newham.

Untold *possibilities*

# Spaces & Stories

Spaces & Stories is an eclectic collection of *out-of-the-ordinary* venues and locations.

We are an established Venue Operator with a difference. Our sites range in style and scale, but are all individual in character, from landmark locations to cultural cornerstones. We help you create stories that endure.



Untold *possibilities*

THANK YOU

+44 (0)203-319-9332  
[www.spacesstories.com](http://www.spacesstories.com)

Spaces & Stories