



UNIT 44 LONDON

Unit 44 London



Unit 44 is an impeccable modern warehouse located moments from London Bridge station. It offers an exclusive setting for filming, brand activations and events.



About Unit 44



An authentic open-plan industrial space, with seven-metre high ceilings, whitewashed walls and concrete floors.

Factory-style skylights and a double-height window with a traditional metal frame flood the space with natural light. Equipped with excellent facilities and ground-floor access, the 444 square-metre venue is a functional, flexible event space with a distinctive industrial character.

A rare opportunity to access this central London warehouse, previously undiscovered among the world-class bars, restaurants and art galleries of Bermondsey.

The venue is available for a limited period as the site awaits redevelopment, making it the ideal choice for location filming, brand activations, exhibitions, private parties and unique events.



A hidden warehouse *uncovered* on Bermondsey Street

CAPACITY

200

SIZE

445 sq.m

ARCHITECTURAL & INTERIOR INFLUENCE

Warehouse
Authentic industrial
Blank canvas

KEY FEATURES

Double height feature window with traditional metal frame
Ceiling height
White-washed interiors
Proximity to London Bridge

PERFECT FOR

TV & film
Ticketed events
Immersive experiences
Product launches
Gallery exhibitions

LOCATION

Bermondsey Street,
London SE1 3XT

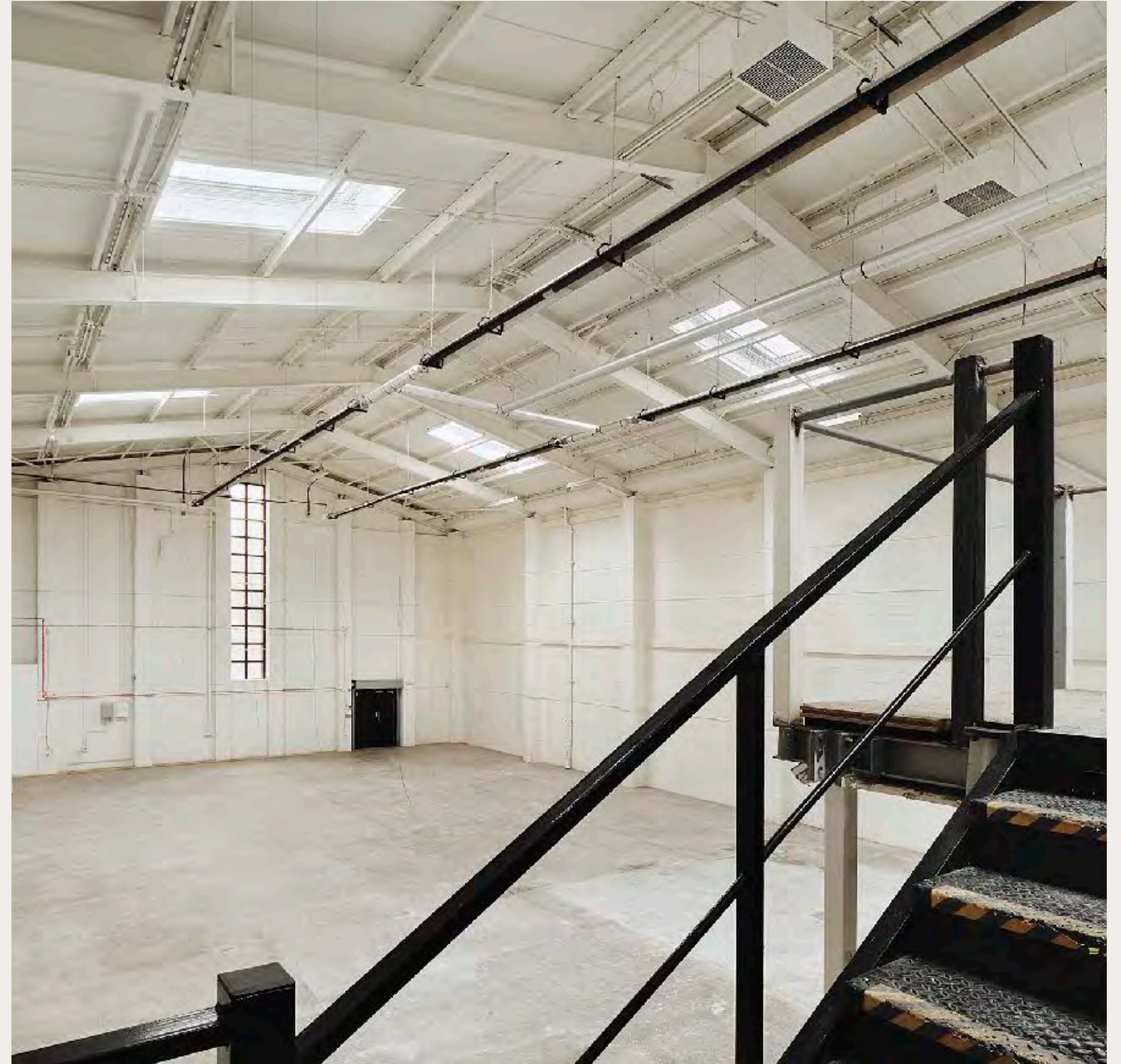


A light-filled modern
warehouse in Central
London





Unit 44 combines
industrial warehouse
architecture with the
facilities of a dedicated
events space.





Spaces The Entrance

The Entrance is located on Bermondsey Street, at the south end of the polychrome brick warehouse. Discreet black double doors open directly into the event space from the street, providing excellent access for loading and a fully accessible entrance for guests.



Spaces Main Space

The large open-plan Main Space provides all the perks of a modern warehouse. With 7.7 metre-high ceilings, skylights and whitewashed walls, the venue is architecturally impressive, bright and functional. A readymade blank canvas, there is a small kitchen with sink and dishwasher, generous bathroom facilities and a versatile mezzanine platform. The space is perfect for location filming and photoshoots, sample sales and markets, exhibitions and private views, private parties and brand events.





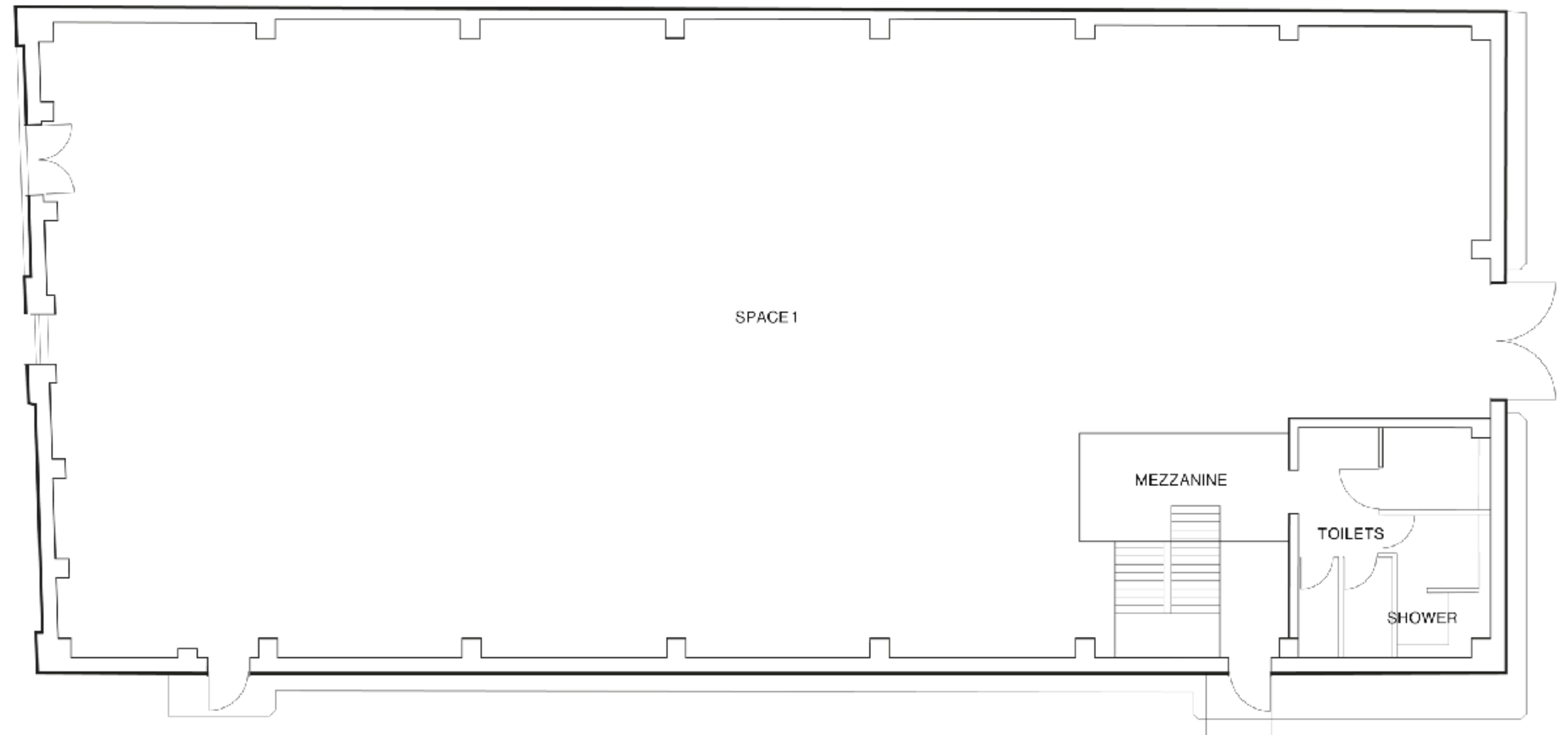
Specifications

Event Spaces		Dimensions				Capacity			
SPACES		L(M)	W(M)	H(M)	SQ,M	STANDING	THEATRE	DINNER	CABARET
Main Space		33	13.5	7.7*	445	200	130	100	80

*To lowest point in roof - up to 9.2m to central apex

Floorplans

Main Area



Location

ADDRESS

42-44 Bermondsey Street
London SE1 3XT

TRANSPORT OPTIONS

London Bridge

ADDITIONAL DETAILS

A central London location between
London Bridge and Borough
Excellent transport links
Several green open spaces nearby
One of London’s most fashionable
neighbourhoods





Neighbourhood

Unit 44 is located on Bermondsey Street, one of central London's foremost destinations for food, drink and culture.

Moments from London Bridge station. Cultural highlights include the Fashion and Textile Museum and White Cube.

Well-loved pubs and restaurants brush shoulders with vibrant new developments, such the open-air food market Vinegar Yard.

Untold *possibilities*

Spaces & Stories

Spaces & Stories is an eclectic collection of *out-of-the-ordinary* venues and locations.

We are an established Venue Operator with a difference. Our sites range in style and scale, but are all individual in character, from landmark locations to cultural cornerstones. We help you create stories that endure.



Untold *possibilities*

THANK YOU

+44 (0)203-319-9332
www.spacesstories.com

Spaces & Stories